

aptem.

Why you should select  
a training provider that  
uses Aptem







## What Aptem providers can offer you

**As an employer, selecting a training provider can be challenging. You want a provider that understands your business and delivers high quality training, while giving you full transparency into the apprenticeship delivery.**

**If your training provider uses the Aptem platform, you can relax knowing that you have chosen a training provider that places quality and compliance at the heart of their processes and that you will have full transparency.**

Aptem is a complete end-to-end delivery platform, helping providers and their customers improve their apprenticeship and vocational training delivery. From employer engagement CRM and recruitment, through to paperless onboarding, administration, learning, funding and reporting, Aptem addresses it all in one, easy-to-use online interface.

Aptem is designed to support you as an employer, so you are involved in your employees' apprenticeship programmes. Aptem has different views depending on the user type – employer, learner, tutor and assessor – where Aptem only shows the functionality that is of interest to each one. This facilitates effective three-way collaboration between employer, provider and learner.

**Aptem is designed to support you as an employer, so you are involved in your employees' apprenticeship programmes.**



As an employer whose provider uses Aptem, you will have full transparency into what is happening with your apprenticeship delivery and full control of what your apprentices are doing.

### 01 Simplify administrative tasks

Aptem simplifies employer administrative tasks such as signing compliance documents electronically, attending review meetings in person or online, verifying attendance and completion of activities, and more. All documentation, such as reviews, learner progress reports and learning plans, is easily accessible in one place rather than receiving copious email communications requesting action.

- ▼ Signing compliance documents electronically

### 02 You are in safe and compliant hands

Aptem is a fully managed and compliant Software as a Service platform that operates through your browser. Aptem is developed by MWS Technology, pioneers in technology solutions for the vocational training, further education and welfare to work sectors since 2009. Aptem is used by providers around the country – a full list of customers may be found at [www.aptem.co.uk/customers](http://www.aptem.co.uk/customers). With ISO 9001 and 27001 accreditations, Cyber Essentials certification and a commitment to help ensure providers comply with GDPR, you can relax knowing you are in safe hands. And as an employer, you want the best possible training for your apprentices – Aptem is known to help providers with their Ofsted inspection, successfully pushing them towards a higher grade.

### 03 An enjoyable blended learning environment for learners

Aptem is designed to support your apprentices with ease of use and access – it is mobile enabled so they can learn remotely through eLearning and webinars. The overall benefit of a single, all-in-one apprenticeship delivery platform is that it automates and streamlines many provider processes – this frees up an enormous amount of staff time so they can focus on optimising and delivering engaging learning journeys for your employees. In fact, providers that use Aptem are known to have a high learner satisfaction score. Aptem provider Corndel, for example, has a score of 94%.

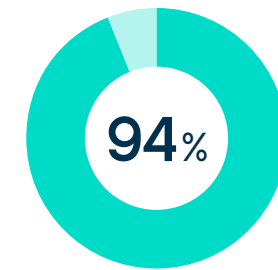
### 04 Capture off-the-job training with ease

Aptem effortlessly captures 20% off-the-job training hours, minimising the stress of this compliance rule.

### 05 Track your apprentices' progress

You will be able to see at the click of a mouse how your apprentices are progressing and which actions they need to complete, with the ability to encourage and support them in real-time via Aptem Collaboration Centre® which is a single place for employer, provider and learner to communicate. Employers receive instant notification of any activity they are required to complete. Aptem Skills Radar® allows employers to track the impact of teaching and feeds the competency report and configurable Information and Guidance (IAG).

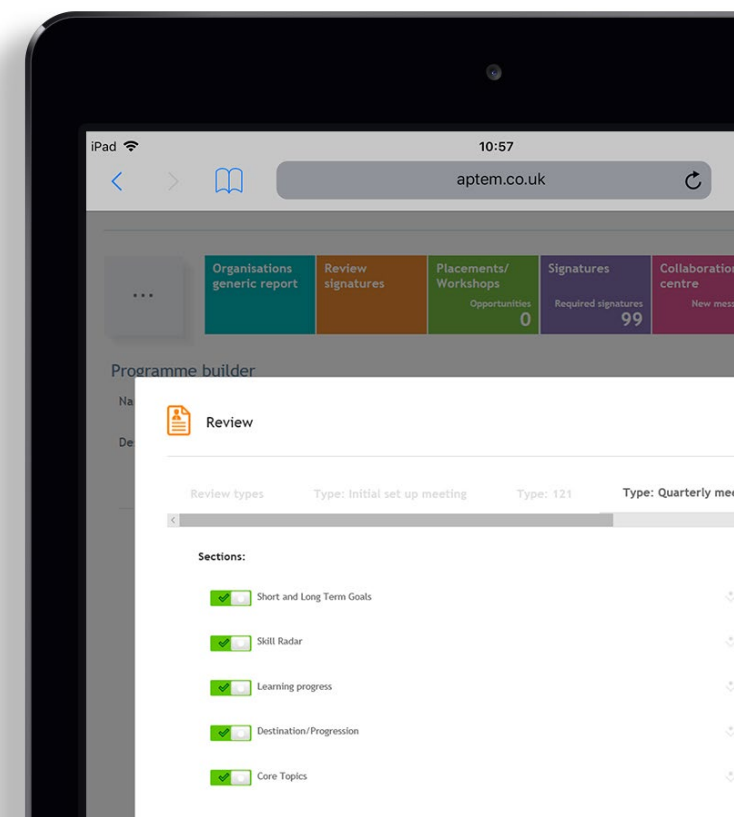
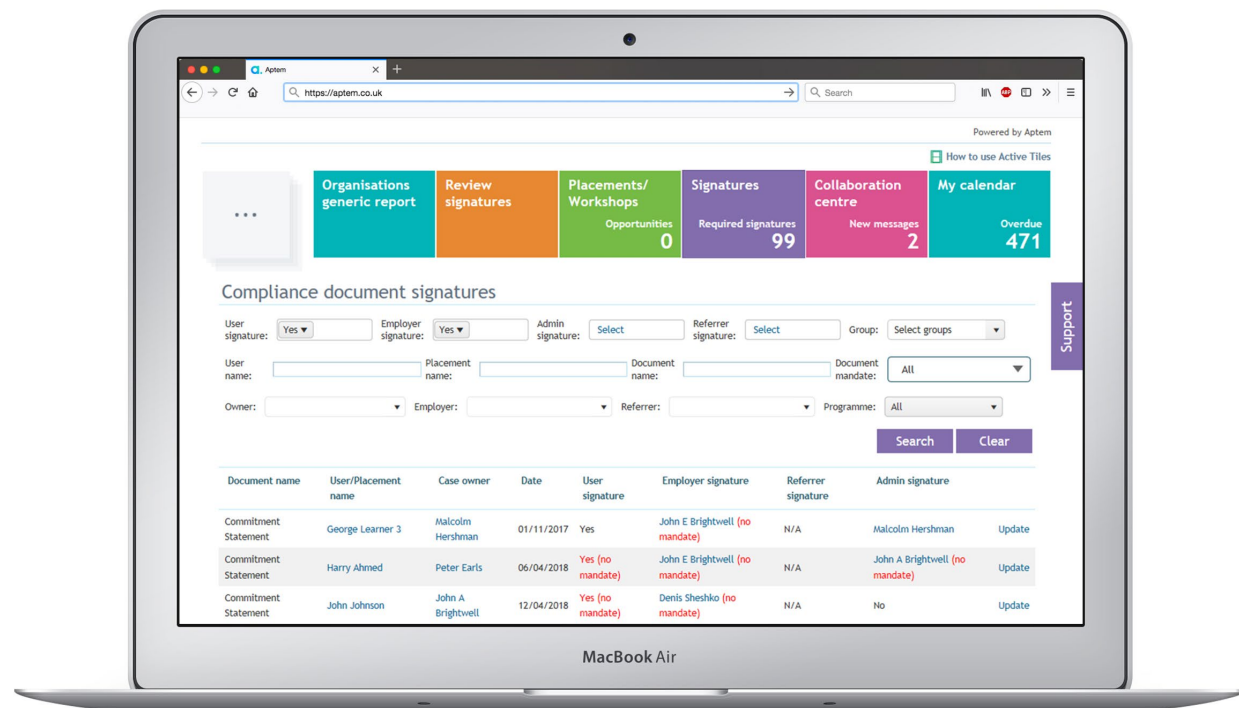
- ▶ Easily view how your apprentices are progressing



“Aptem providers are known to have a high learner satisfaction score. Aptem provider Corndel, for example, has a score of 94%.”

### 06 Real-time information at your fingertips

With full access to Aptem’s dynamic reporting suite, you can produce your reports at a click of a mouse. You don’t need to rely on periodic information from your provider – you have your own clear view into your apprentices’ progress. Employer reporting is entirely configurable, so if there is any data you’d like to track, you may easily do so.





## 07

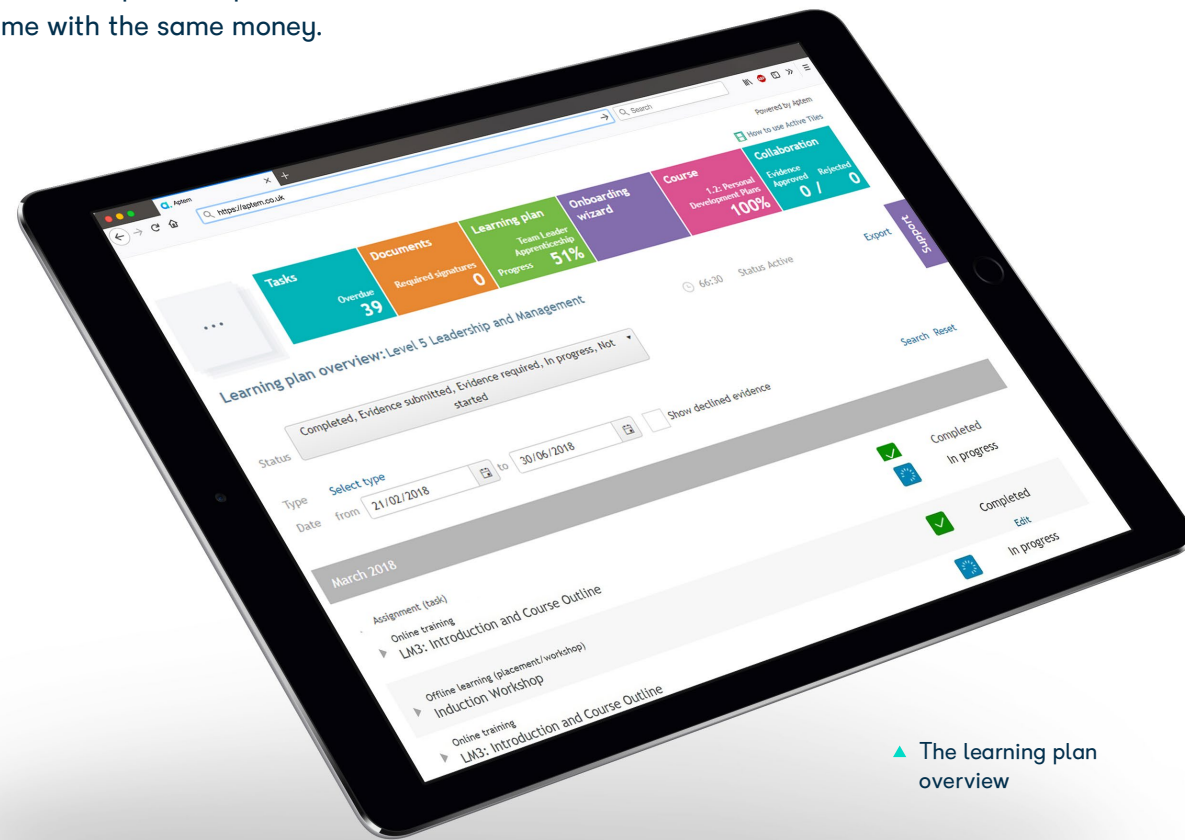
**Build custom reviews**

Aptem's Review Manager allows providers to build custom reviews, meaning that you can be confident your employees are being supported by rigorous reviews that maximise the quality of their apprenticeship training. Aptem Skills Radar, learner progress tracking and learner satisfaction are tied into Aptem reviews helping you ensure delivery is consistently effective.

## 08

**Learners can get an apprenticeship and a qualification simultaneously**

The learning plan has multi tracking so that as a learner studies for their apprenticeship, they can study for a qualification alongside it. An apprenticeship and a qualification at the same time with the same money.



▲ The learning plan overview

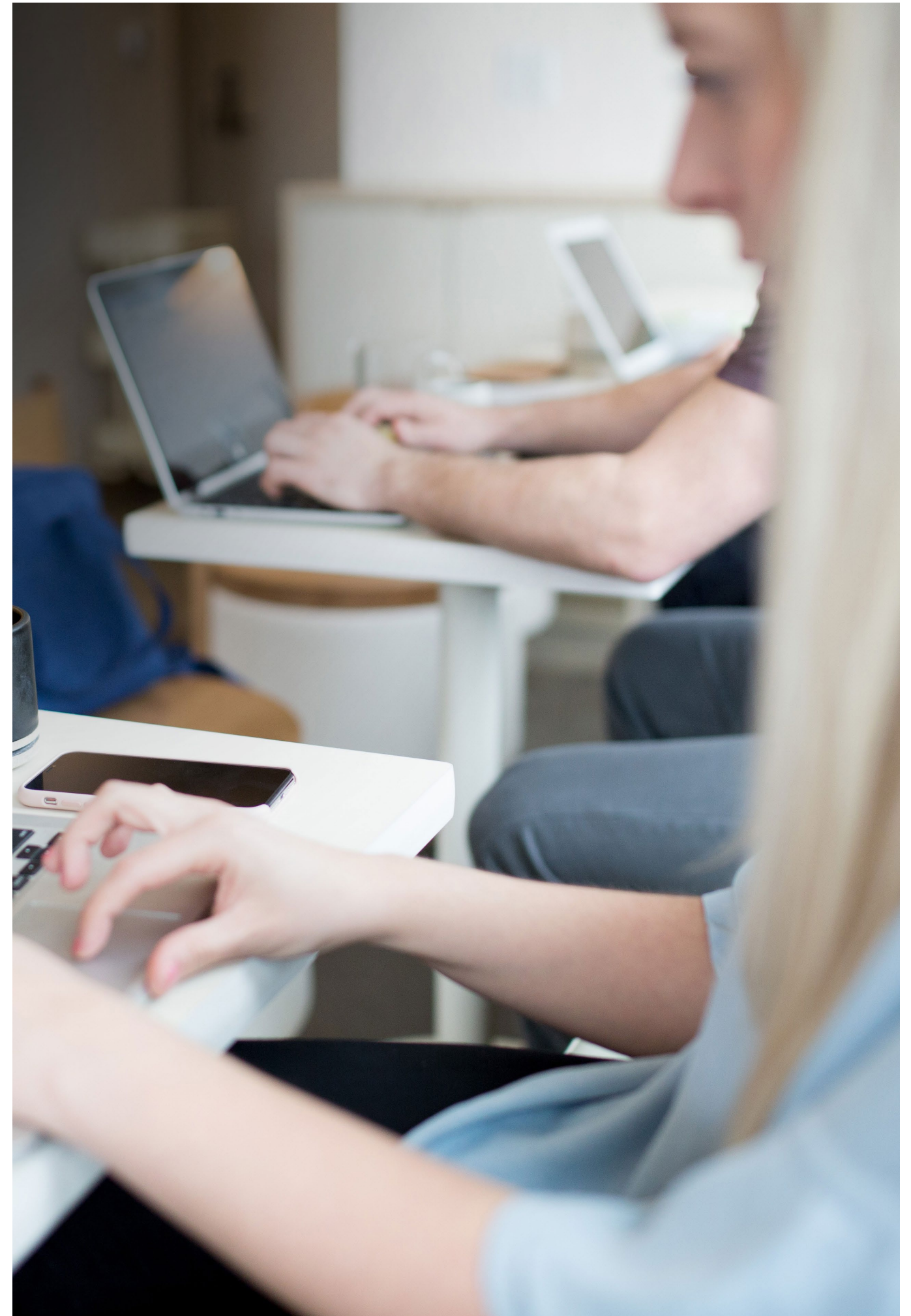
## 09

**Feel supported**

There is a range of Aptem support materials available to help our customers' customers become experts on the system, making using Aptem a breeze.

**And much more...**

Aptem allows you to relax in the knowledge that your levy is being used efficiently.





Aptem is the latest product developed by MWS Technology, pioneers in technology solutions for the vocational training, further education and welfare to work sectors since 2009.

[info@aptem.co.uk](mailto:info@aptem.co.uk)  
020 7870 1000

[www.aptem.co.uk](http://www.aptem.co.uk)